


# Table Rock

## Feather River Ranger District



### General Information

Mileage	1.0 miles one way
Elevation Change	6100 feet to 6908 feet
Difficulty	 (moderate)
Use Level	Moderate
Quad Map	La Porte
Location	NE1/4Sec8 T21N R10E MDBM



### Access

Depart: From Oroville at Oro-Dam Blvd. / Hwy 70

Turn:	Road Name/Description:	Miles:	Notes/Sights
RIGHT	Oro-Quincy Hwy (162)	7.3	
RIGHT	Forbestown Road	16.6	Called Challenge Cut-off
LEFT	La Porte Road	25.6	
RIGHT	Howland Flat (Narrows - last 5.1 mi)	approx 8	Wide dirt/gravel road
RIGHT	Road # 21N10Y	approx 2	
RIGHT	Road # 21N41	0.5	Extremely rough road
LEFT	Trailhead		

### Note:

Open water sources are easily contaminated by human or animal waste. Water from springs, lakes, ponds, and streams should be properly treated before drinking. One recommended method of treatment is to bring clear water to a rolling boil for five minutes.

### Trail Description

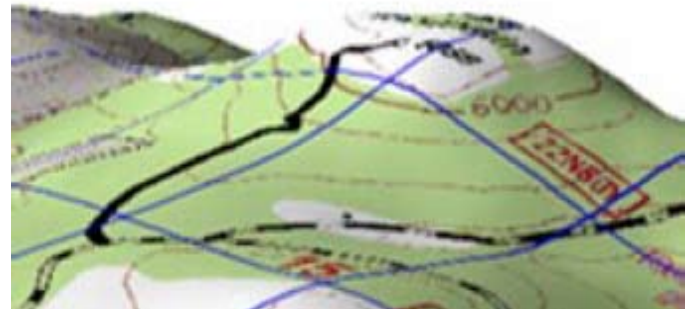
Feel as if you are on top of the world. At an elevation of 6908 feet, you will see outstanding views of the vast territory surrounding Table Rock. Off in the distance, Lassen Peak is easily seen to the northwest.

Most of the trail is a broad path through the forest. Near the end, however, the trail narrows allowing only hikers to continue. This last stretch is a scramble over a rocky terrain, but it is well worth the effort. Be mindful of rattlesnakes as you travel across the rocks. This section of the trail uses stacked rocks to mark the path.

*(The trail is generally open from mid-June to mid-October, snow and road conditions permitting.)*

### Be Aware:

Remote area (Bring a first aid kit)  
4-wheel drive vehicle necessary



### Feather River Ranger District

875 Mitchell Avenue  
Oroville, California 95965  
(530) 534-6500

**Challenge Visitor Center**  
(530) 675-1146

### All are Welcome

The U.S. Department of Agriculture (USDA) prohibits discrimination in all its programs and activities on the basis of race, color, national origin, age, disability, and where applicable, sex, marital status, familial status, parental status, religion, sexual orientation, genetic information, political beliefs, reprisal, or because all or a part of an individual's income is derived from any public assistance program. (Not all prohibited bases apply to all programs.) Persons with disabilities who require alternative means for communication of program information (Braille, large print, audiotape, etc.) should contact USDA's TARGET Center at (202) 720-2600 (voice and TDD). To file a complaint of discrimination write to USDA, Director, Office of Civil Rights, 1400 Independence Avenue, S.W., Washington, D.C. 20250-9410 or call (800) 795-3272 (voice) or (202) 720-6382 (TDD). USDA is an equal opportunity provider and employer.